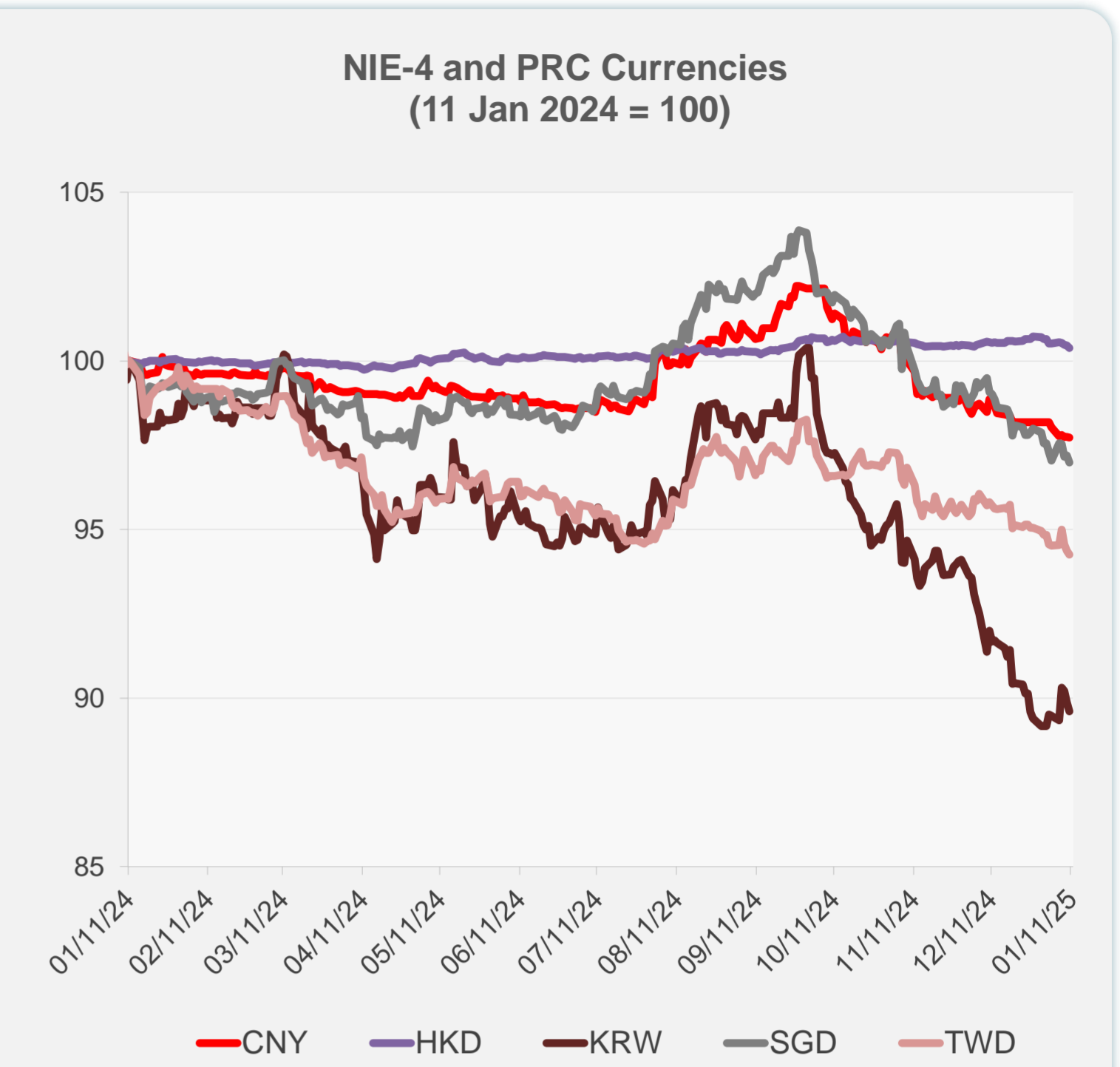
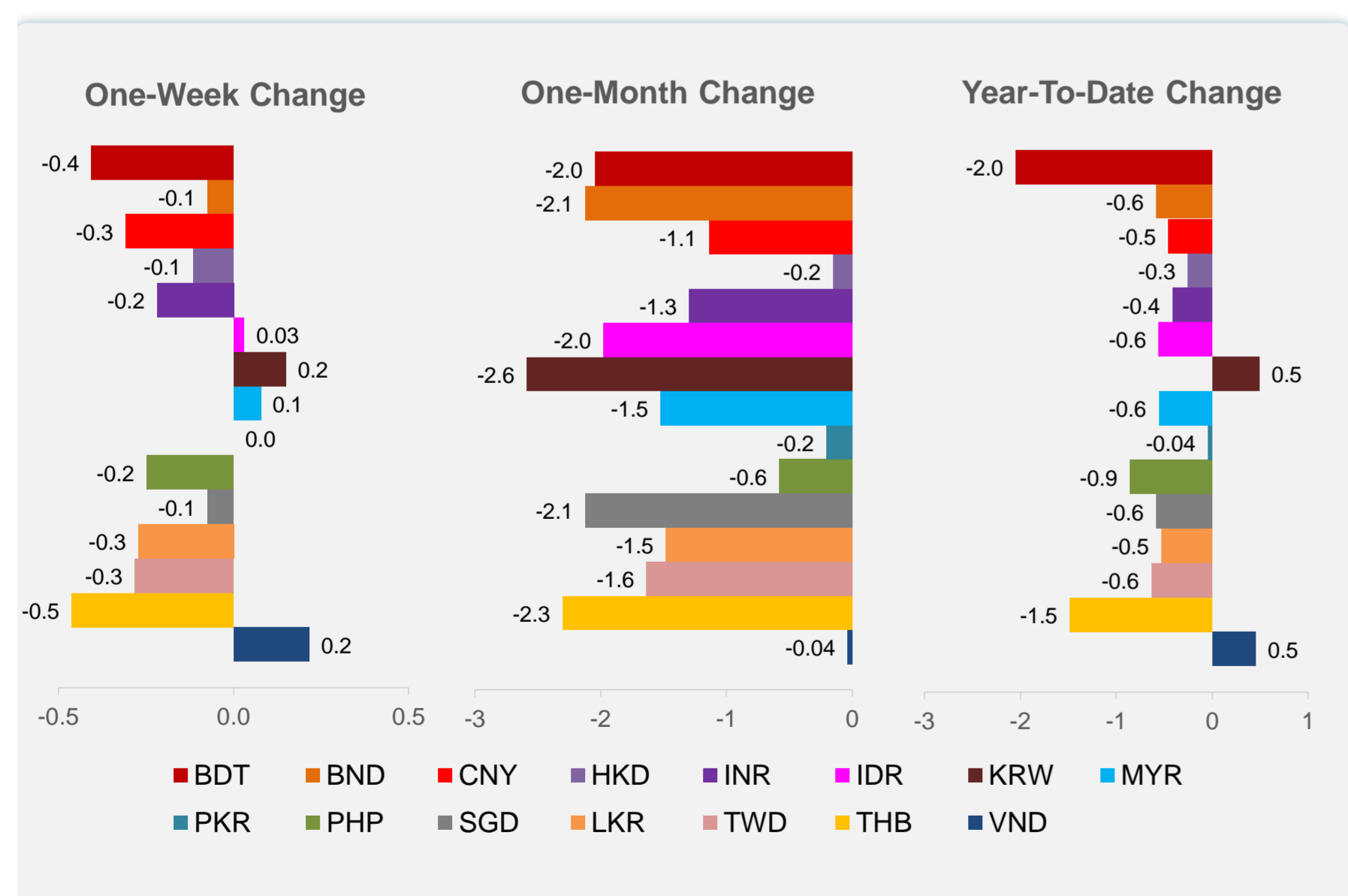
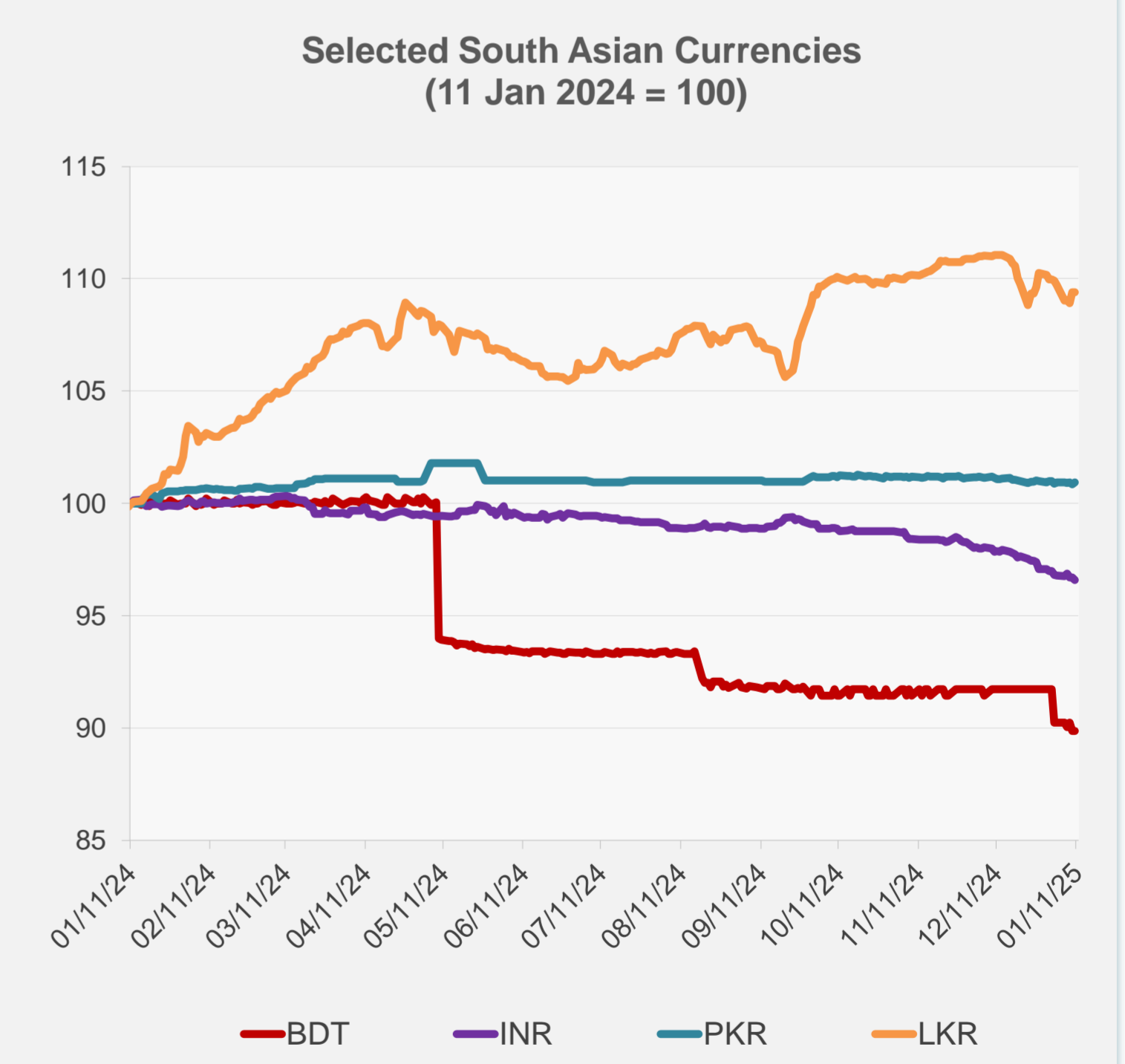
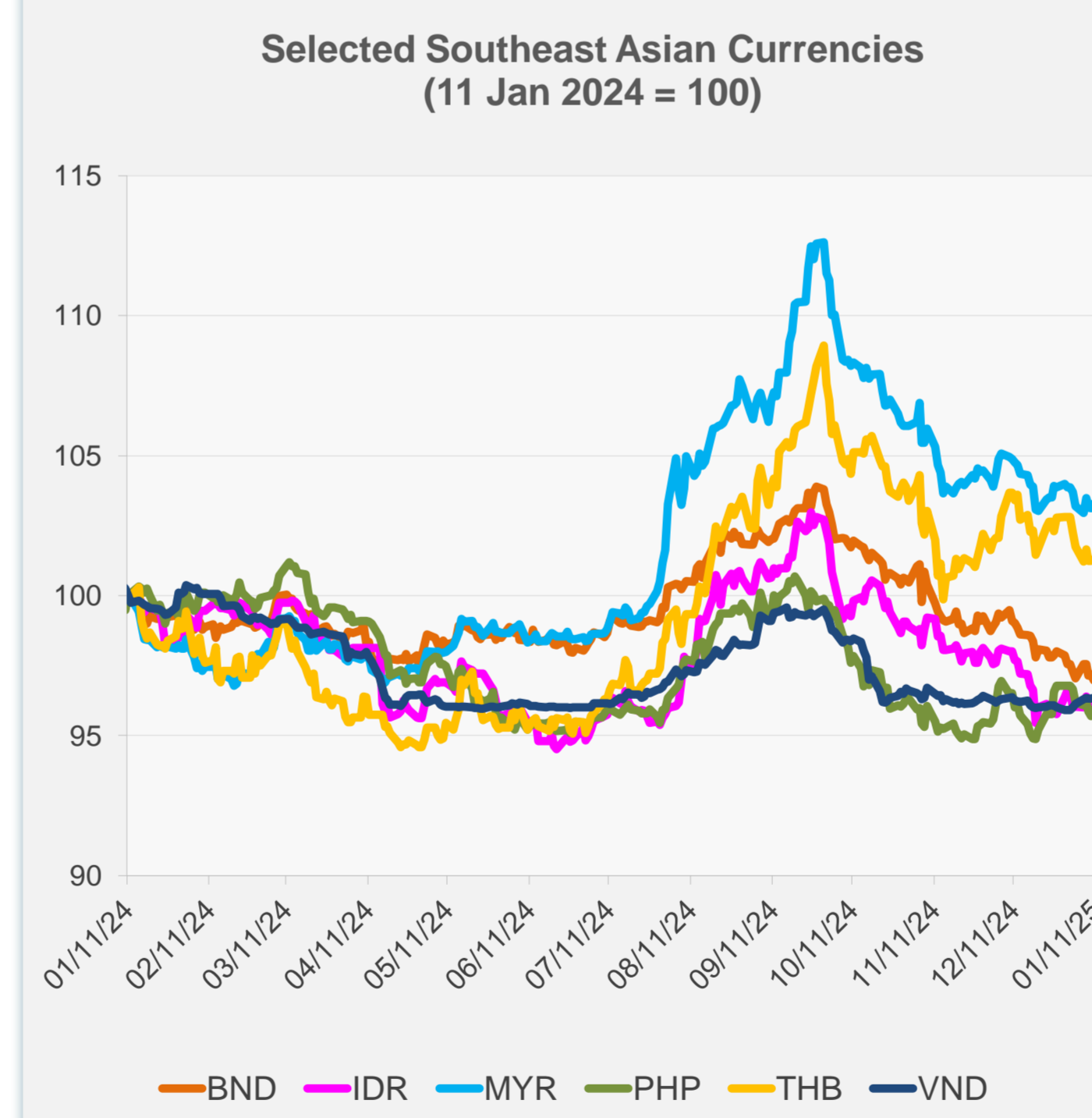


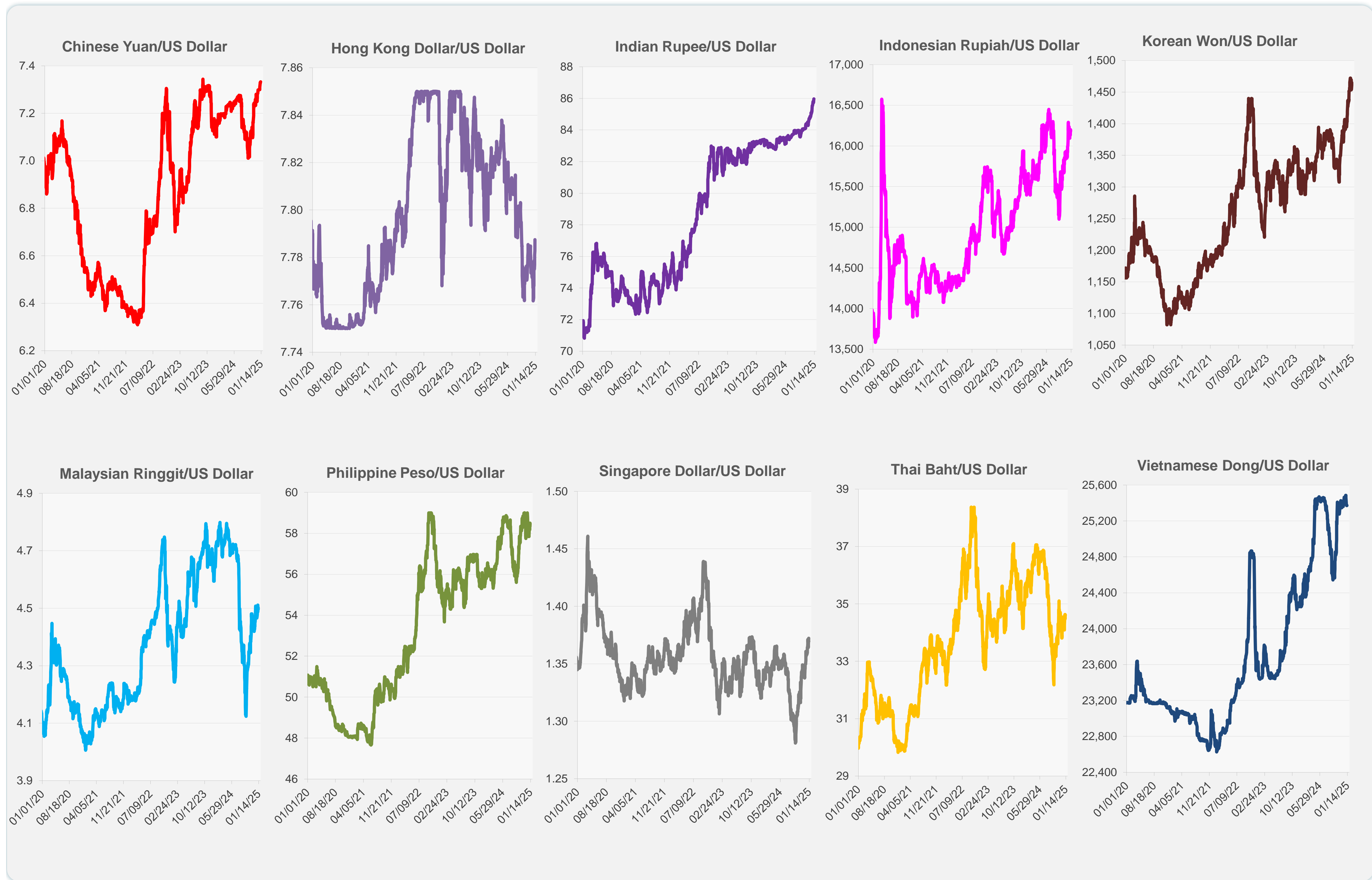
	Latest Closing	% change from Previous Day	% change from 01-Jan-25
Euro	0.98	-0.49	-1.02
Japanese yen (JPY)	157.58	0.25	-0.27
Bangladeshi taka (BDT)	122.00	0.00	-2.05
Brunei dollar (BND)	1.37	-0.23	-0.58
Chinese yuan (CNY)	7.33	-0.01	-0.45
Hong Kong dollar (HKD)	7.79	-0.06	-0.25
Indian rupee (INR)	85.97	-0.12	-0.41
Indonesian rupiah (IDR)	16,185.00	0.09	-0.56
Korean won (KRW)	1,464.95	-0.29	0.49
Malaysian ringgit (MYR)	4.50	0.14	-0.56
Pakistan rupee (PKR)	278.50	0.08	-0.04
Philippine peso (PHP)	58.35	0.27	-0.86
Singapore dollar (SGD)	1.37	-0.23	-0.58
Sri Lanka rupee (LKR)	294.55	0.01	-0.53
Taipei,China NT dollar (TWD)	32.99	-0.12	-0.63
Thai baht (THB)	34.61	0.05	-1.48
Vietnamese dong (VND)	25,370.00	0.02	0.45



NIE = Newly Industrialized Economies

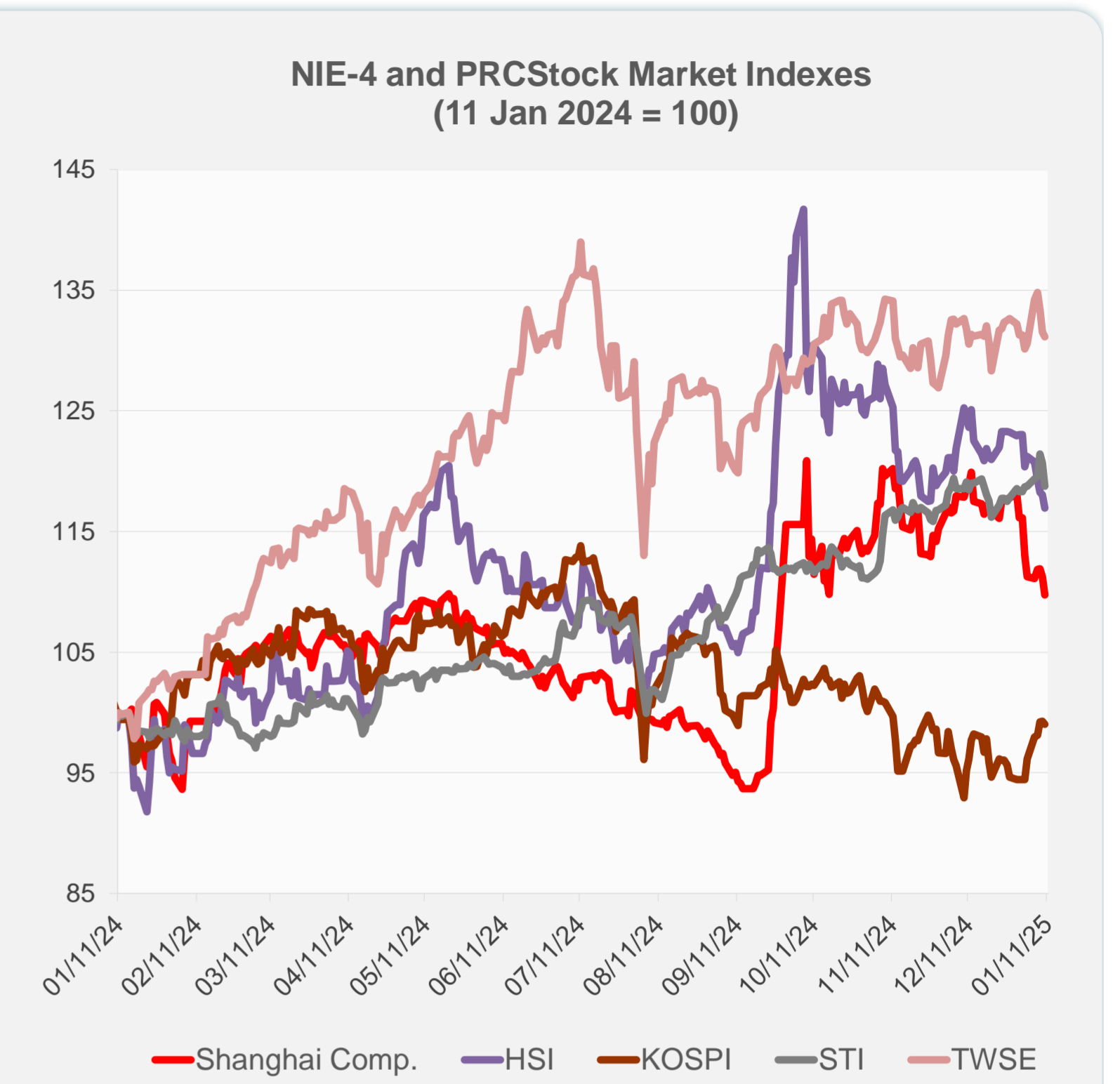
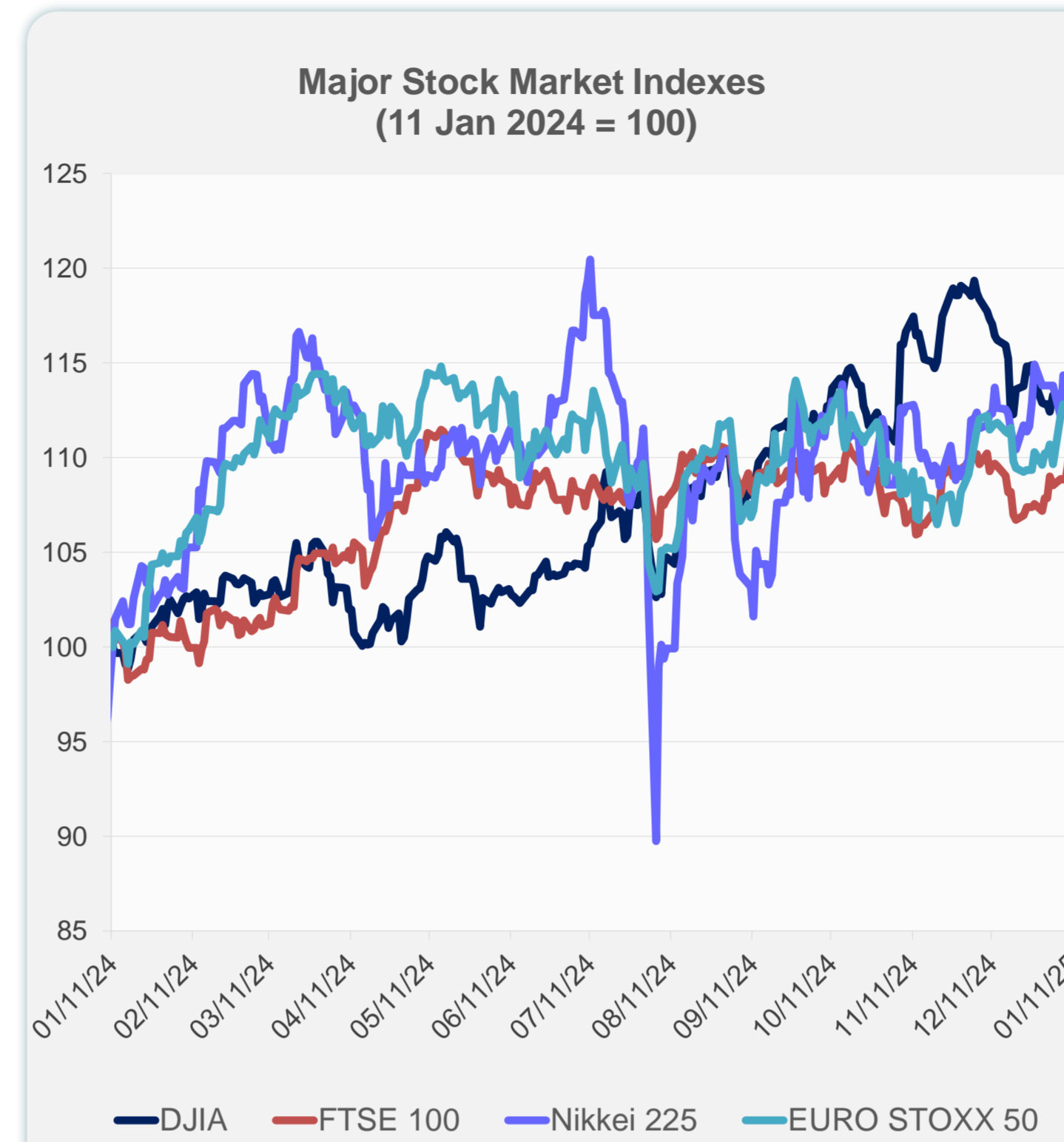


Note: Negative/Decreasing values indicate depreciation of local currency, and positive/increasing values indicate appreciation.
Source: ADB calculations using data from Haver Analytics.

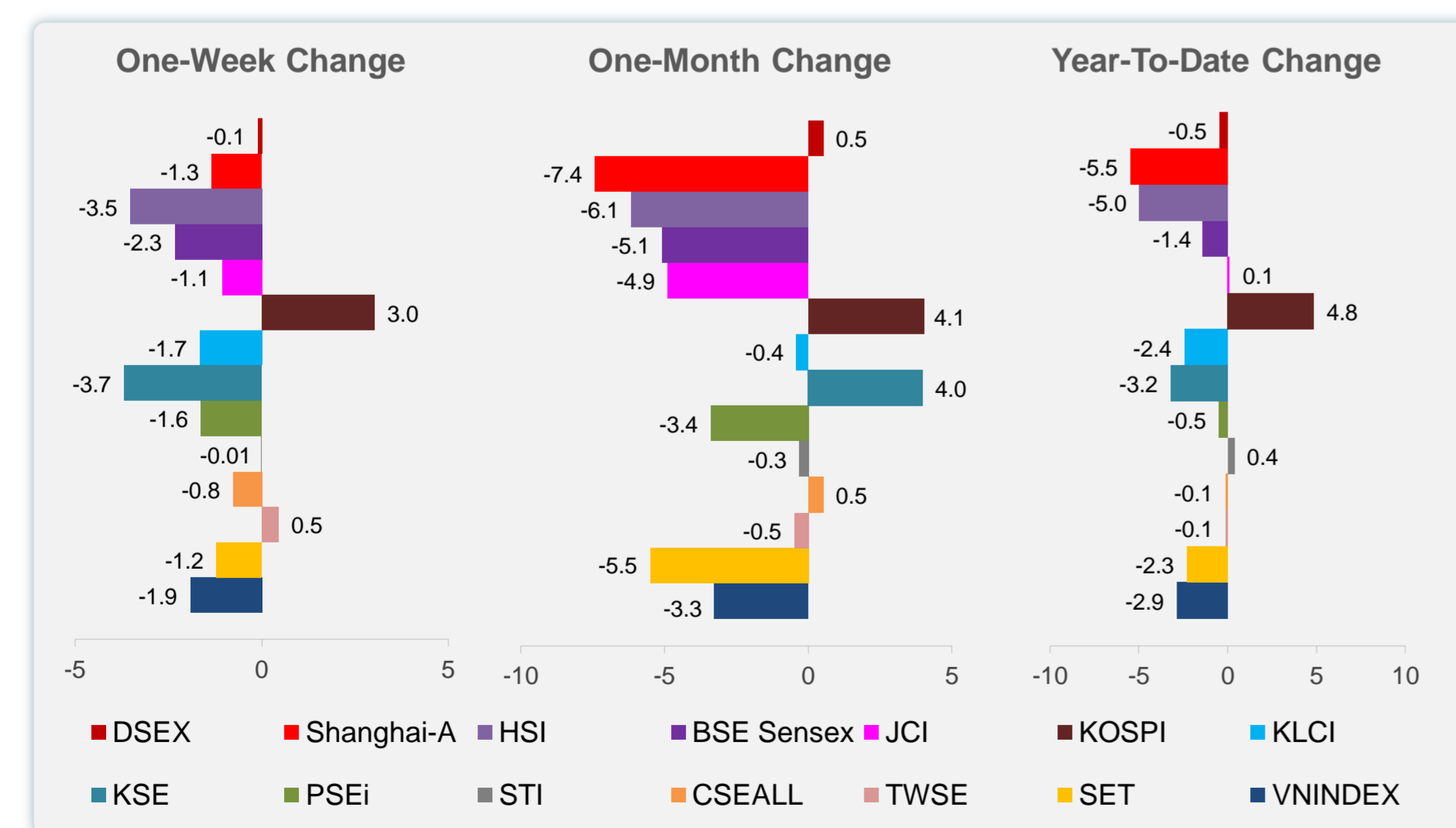
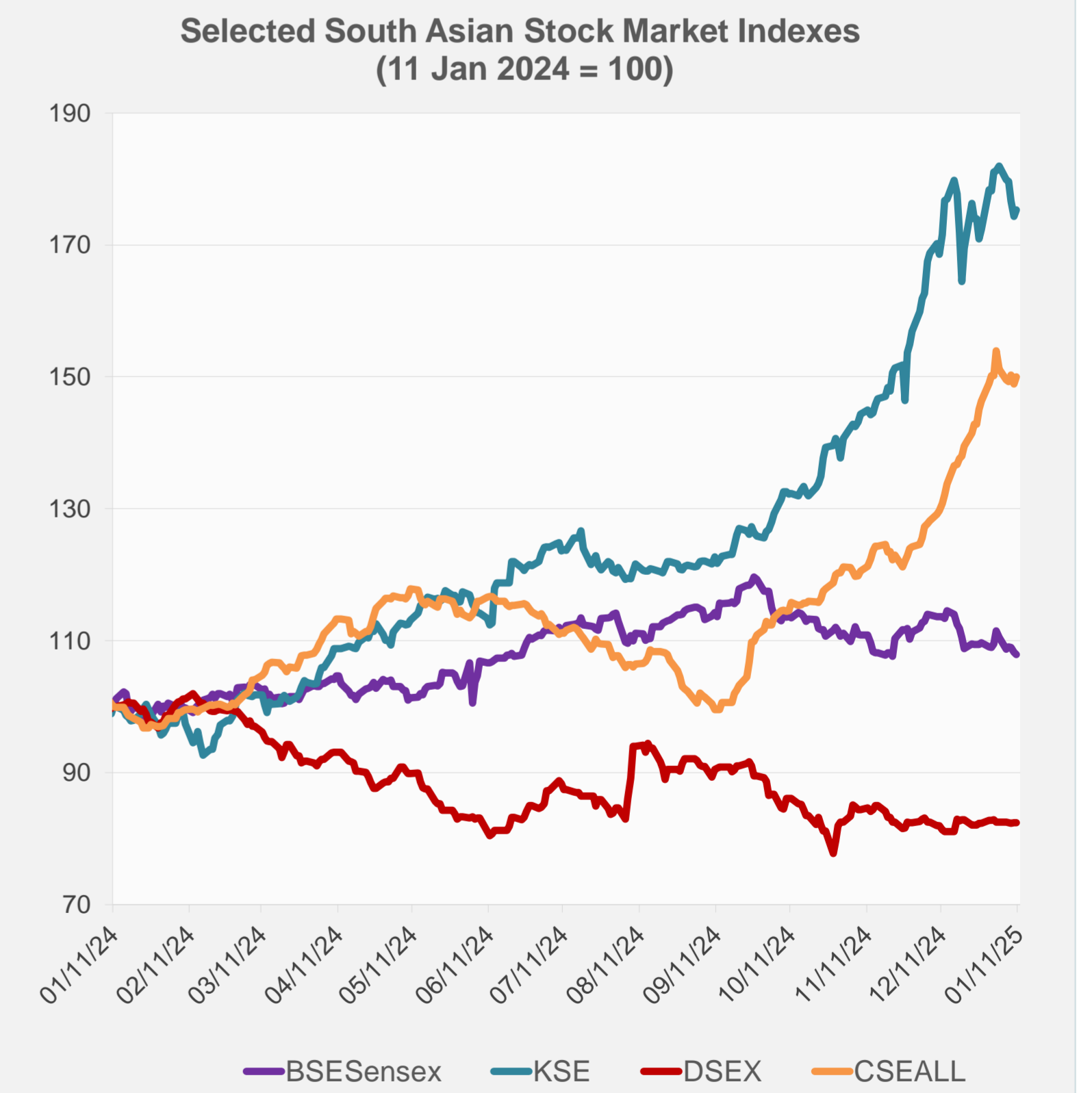
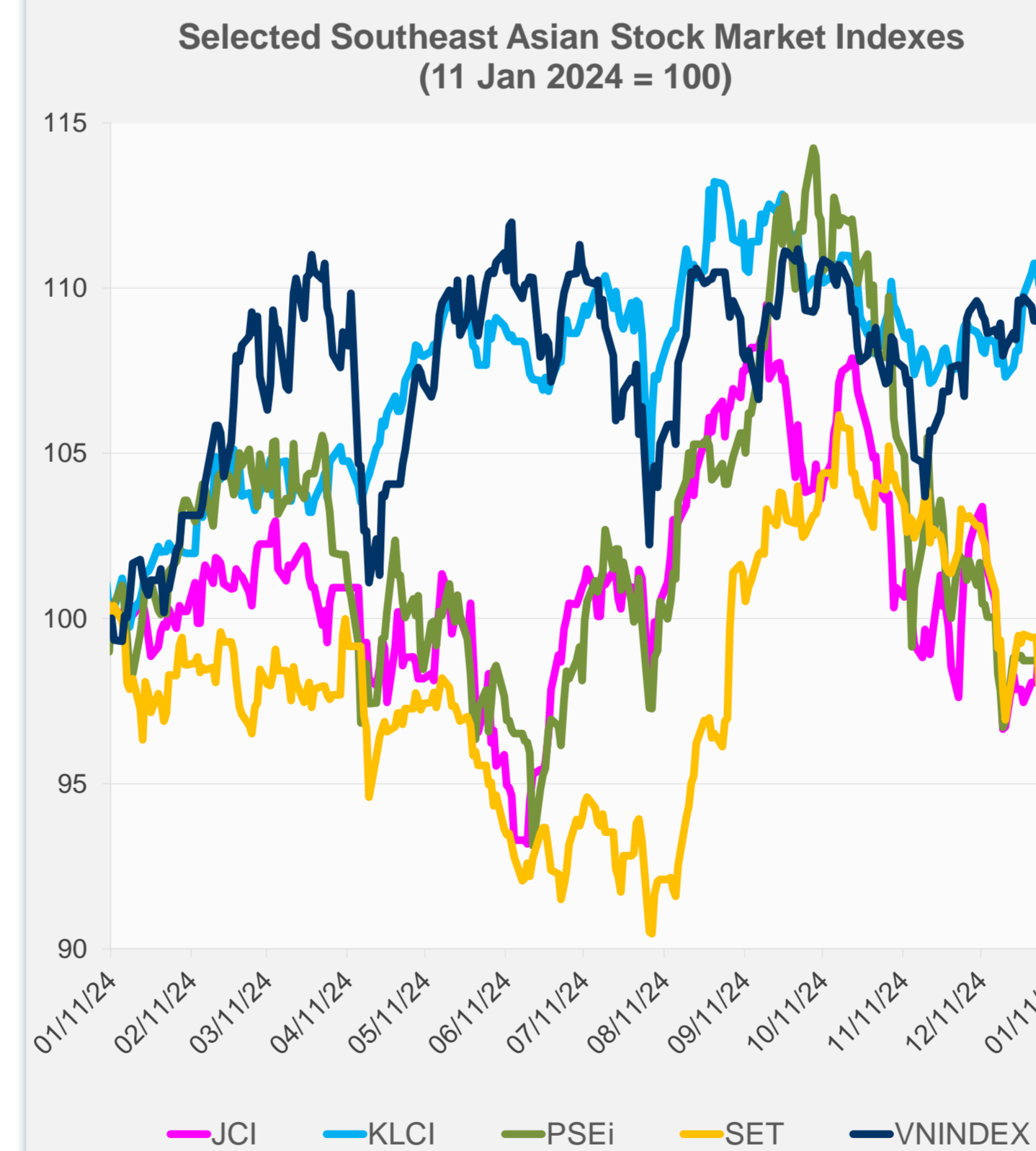


Source: Haver Analytics.

	Latest Closing	% change from Previous Day	% change from 01-Jan-25
US Dow Jones Ind Avg	41,938.45	-1.63	-1.42
US NASDAQ	19,161.63	-1.63	-0.77
US S&P 500	5,827.04	-1.54	-0.93
UK FTSE 100	8,248.49	-0.86	0.92
EURO STOXX 50	4,977.26	-0.81	1.66
Japan NIKKEI 225	39,190.40	-1.05	-1.77
Bangladesh DSEX	5,194.43	0.00	-0.45
PRC Shanghai Comp.	3,168.52	-1.33	-5.47
Hong Kong, China HSI	19,064.29	-0.92	-4.96
India BSE Sensex	77,378.91	-0.31	-1.44
Indonesia JCI	7,088.87	0.34	0.13
Korea, Rep. of KOSPI	2,515.78	-0.24	4.85
Malaysia KLCI	1,602.41	0.10	-2.43
Pakistan KSE 100	113,247.29	0.54	-3.21
Philippines PSEi	6,496.32	-0.23	-0.50
Singapore STI	3,801.56	-1.58	0.37
Sri Lanka CSEALL	15,926.00	0.73	-0.12
Taipei, China TWSE	23,011.86	-0.30	-0.10
Thailand SET	1,367.99	0.37	-2.30
Viet Nam VNINDEX	1,230.48	-1.23	-2.87



NIE = Newly Industrialized Economies



Sources: ADB calculations using data from CEIC Data Company and Haver Analytics.



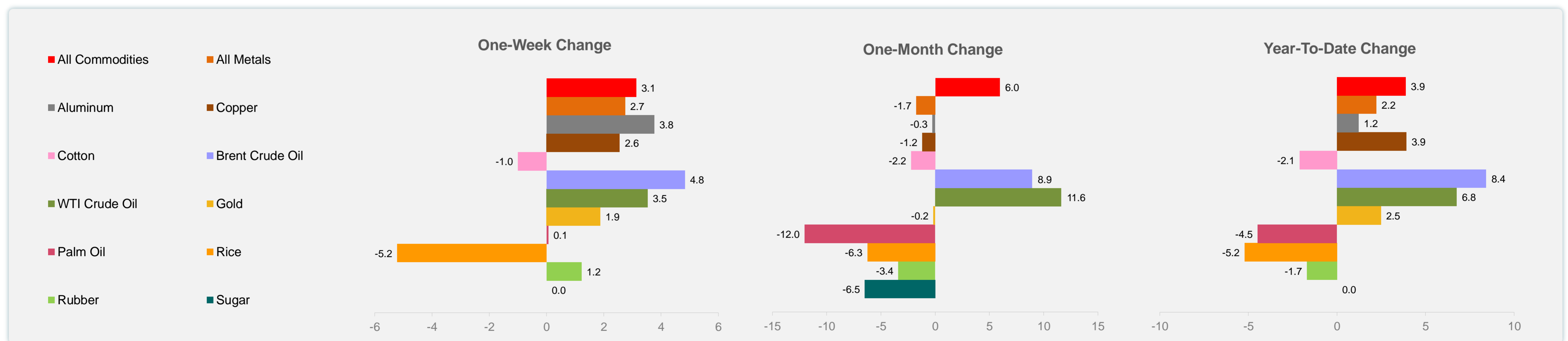
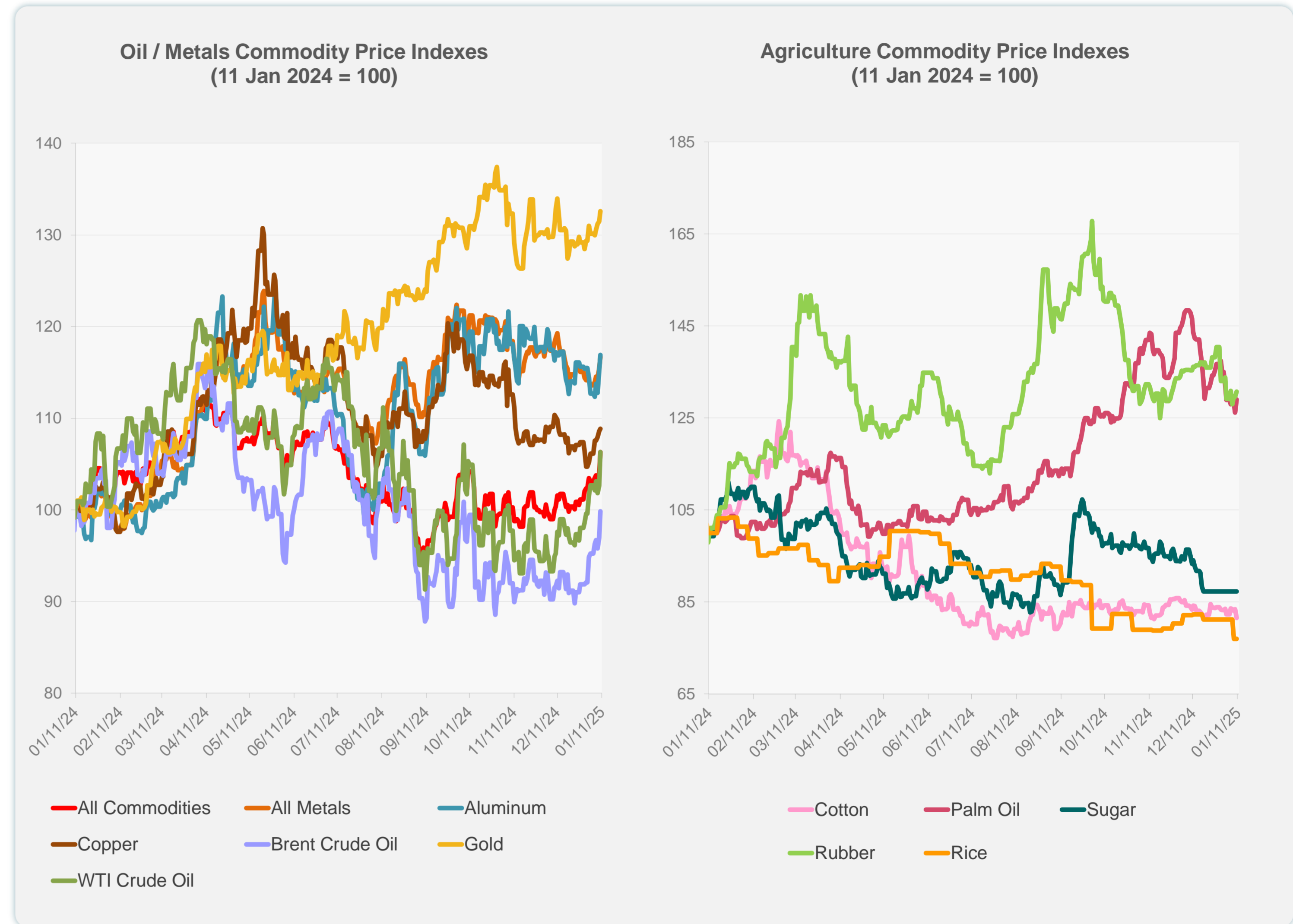
Sources: CEIC Data Company and Haver Analytics.

Daily Market Watch
COMMODITY PRICES

	Unit	Latest Closing	% change from Previous Day	% change from 01-Jan-25
S&P All Commodities	US\$	570.97	2.33	3.88
S&P All Metals	US\$	314.23	1.10	2.23
Aluminum	US\$/metric ton	2,557.85	1.49	1.23
Copper	US\$/metric ton	8,991.86	0.23	3.92
Cotton	US cents/lb	64.51	-2.26	-2.11
Brent Crude Oil	US\$/barrel	80.35	2.98	8.43
WTI Crude Oil	US\$/barrel	76.57	3.58	6.76
Gold	US\$/troy oz	2,689.76	0.84	2.49
Palm Oil	US\$/metric tonne	1,050.92	2.18	-4.47
Rice ¹	US\$/metric ton	509.00	0.00	-5.21
Rubber ²	US\$/kg	232.80	0.91	-1.69
Sugar	US cents/lb	18.59	0.00	0.00

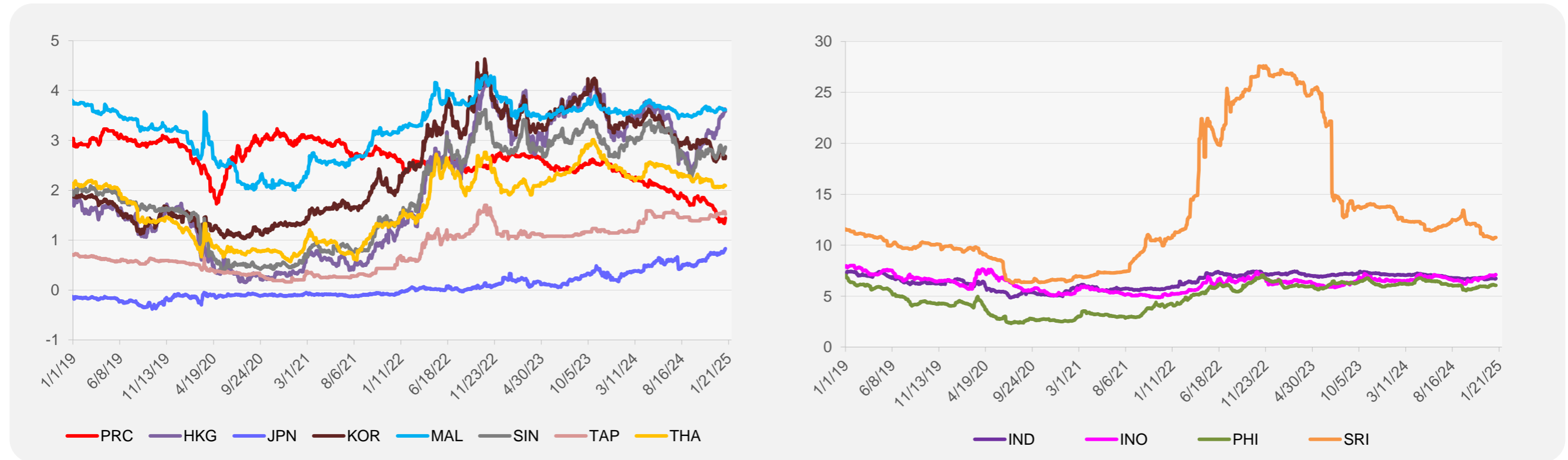
¹ Latest closing price from 8 January 2025.

² Singapore Exchange, Ribbed Smoked Sheet Rubber.

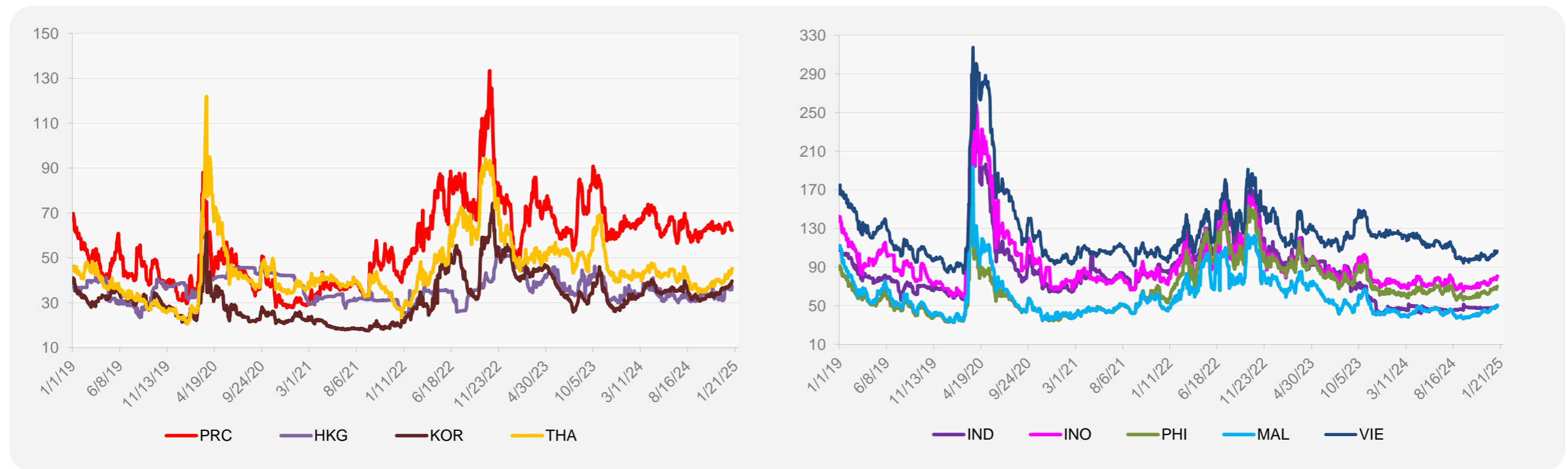


Source: ADB calculations using data from Bloomberg.

5-YEAR LOCAL CURRENCY GOVERNMENT BOND YIELDS (%)



5-YEAR CREDIT DEFAULT SWAP¹



¹ In USD and based on sovereign bonds.
Source: ADB calculations using data from Bloomberg.